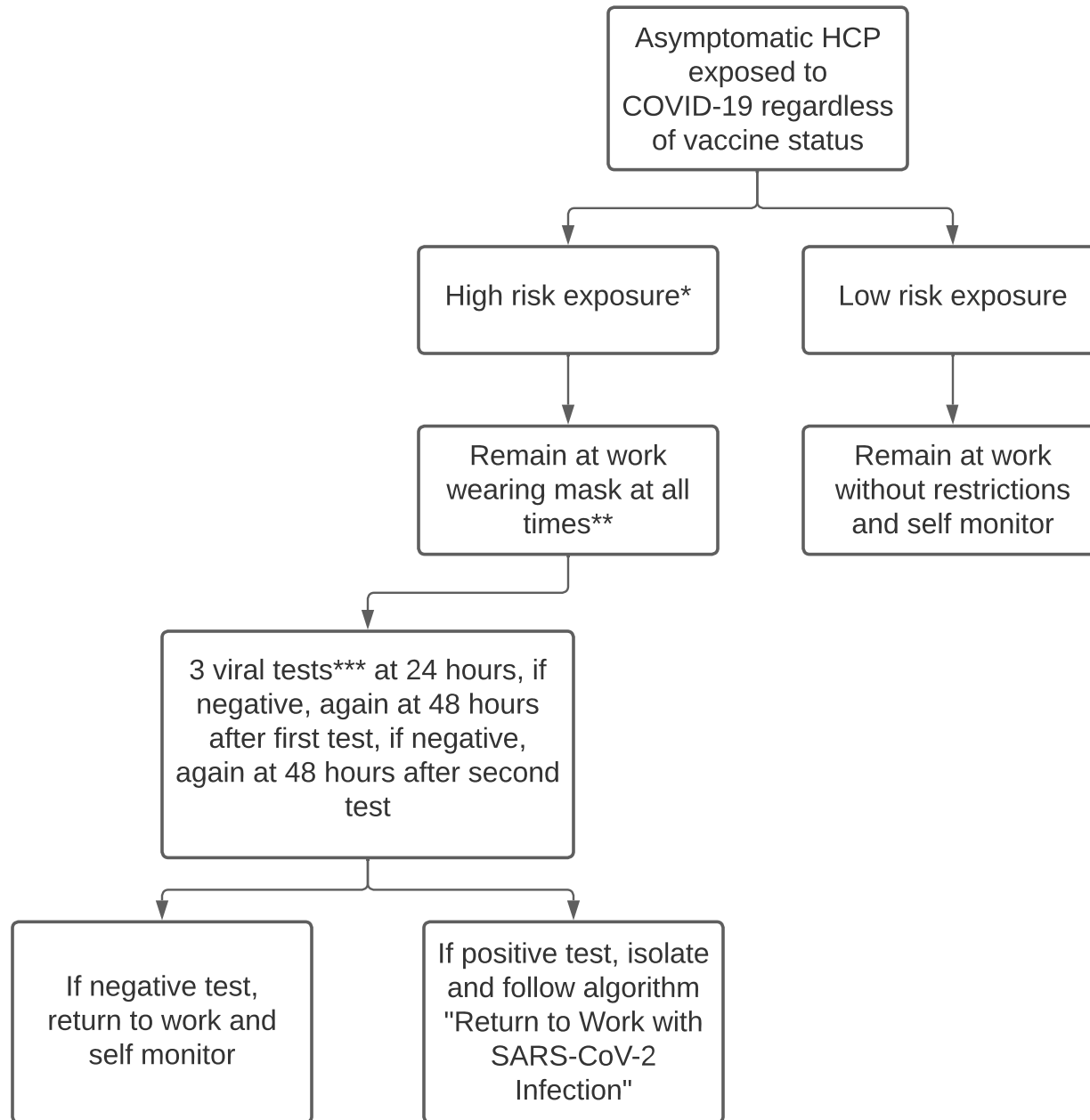


Return to Work for Asymptomatic Healthcare Personnel (HCP) Exposed to COVID-19



* High risk includes encounters with a COVID-19 patient in which HCP was not wearing a respirator or eye protection, encounters in which the HCP was wearing a facemask and the infected person was not, encounters with a COVID-19 patient involving aerosolizing procedures in which HCP was not wearing full PPE including respirator, eye protection, gloves, and gown

** Exceptions include those who are immunocompromised and other determinations by Employee Health

*** Antigen or NAAT. Those with positive COVID-19 test within the past 30 days do not test. Those with positive COVID-19 test in the prior 31-90 days should use an antigen test rather than NAAT due to the potential of false positive results.